

## **Instruction For Installation and List of Changes in New Version**

**NOTE:** While uploading the Version 3.0 following care has to be taken:

*In case the wage data for a month has already been uploaded before installation of this version and 12A and Challan have not been generated, then there are two options:*

- a. Generate the 12A and Challan and then follow the instructions to install the new version.*
- b. Install the software and then reset the wage data for the months for which the Form 12A and Challan are to be generated now. Upload wage data for the months again and generate the 12A and Challan.*

1. In this version of E Return software Arrears are included in Form6A, Challan and Form12A.
2. In this version Arrear are added in the Form6A report.
3. One problem i.e. while generating data for more than one Financial Years then the Contribution of the month of March in the previous financial year is replaced by the Contribution of the month of March of the current financial Year. This problem was resolved.
4. Steps for installing the New Version of E Return Software

1. In case the software has been installed and data base is already created, following steps are to be taken:

- a. Before un-installing the software, go to Program Files>>EPFO Folder (if you have not changed the folder while installing, or otherwise the folder where the software was installed) >> E Return Setup >> App\_code.
- b. Open the App\_code folder and copy the file named as **est.mdb** save it to some another location.
- c. Un install the software through Control Panel>>Programs and Features>>Uninstall (E Return Setup).
- d. Use the setup.exe file downloaded from the website for installation.
- e. Note: During installation the default location will be C:\Program Files\EPFO\E Return Setup.

- f. After installation, open the E Return setup folder. (C:\Program Files\EPFO\E Return Setup\ App\_code) and replace the **est.mdb** file with the earlier copied **est.mdb** file.
- g. Start using the software. There is no need to add the establishment again and the data base also remains.

IMP: In case you forget to keep a copy of the **est.mdb** before un installing the software and want to use the earlier created database.

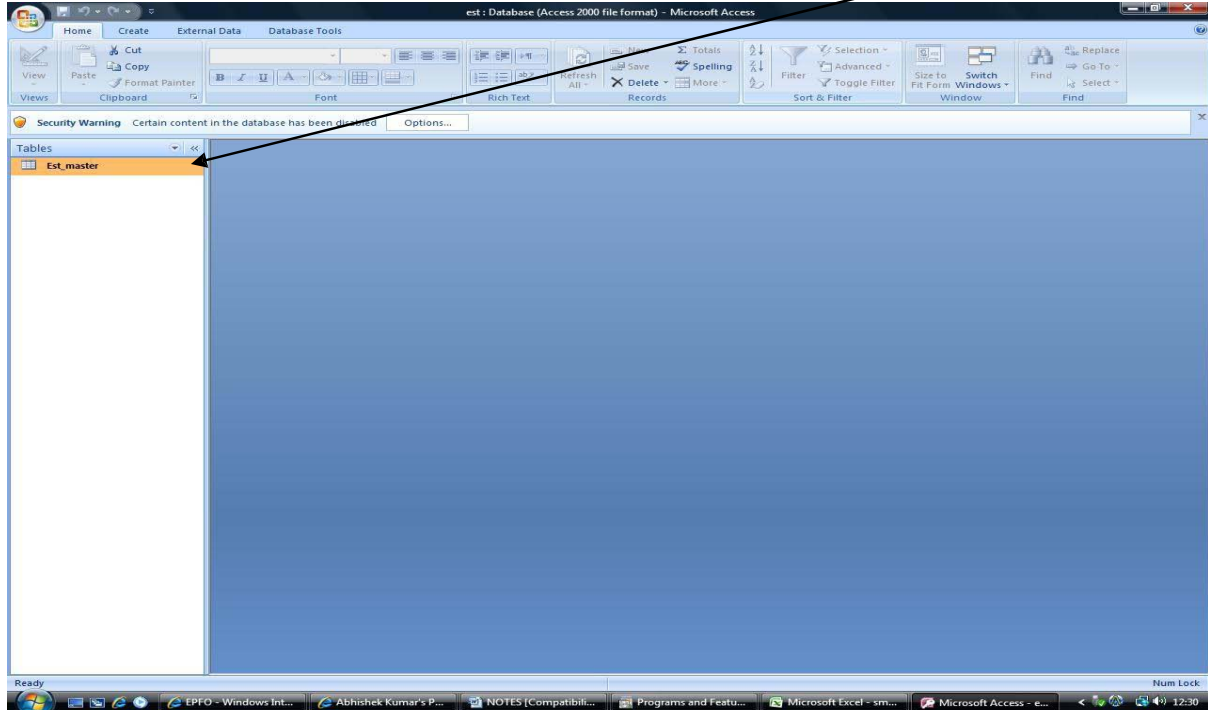
Install the new version of the software after downloading the two files, namely, Setup.exe and EReturnsetup.msi from the website.

There is no need to download the other three files namely Crystal Reports 10\_5, Dotnet FX 35, and Windows installer 3\_5, in case you have already installed the software once.

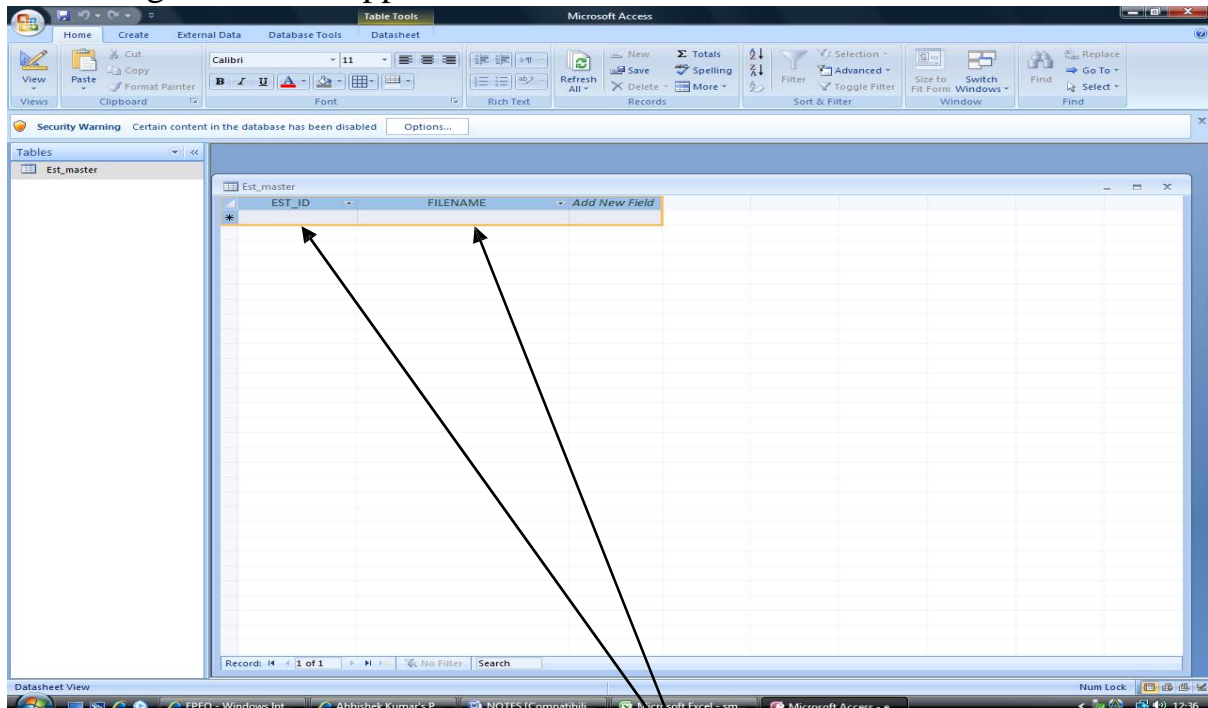
Note: The path of software installation first time and after reinstallation should be same. In case the earlier path was different, copy the ret<estt id>.mdb files

(for example retHRKNL0003501000.mdb ) from the earlier location and copy them in the new location. After installation, go to C:\Program Files\EPFO\E Return Setup\App\_code.

Open App\_code folder and open est.mdb file by double click.



The opened file will not have any data.  
Following screen will appear.

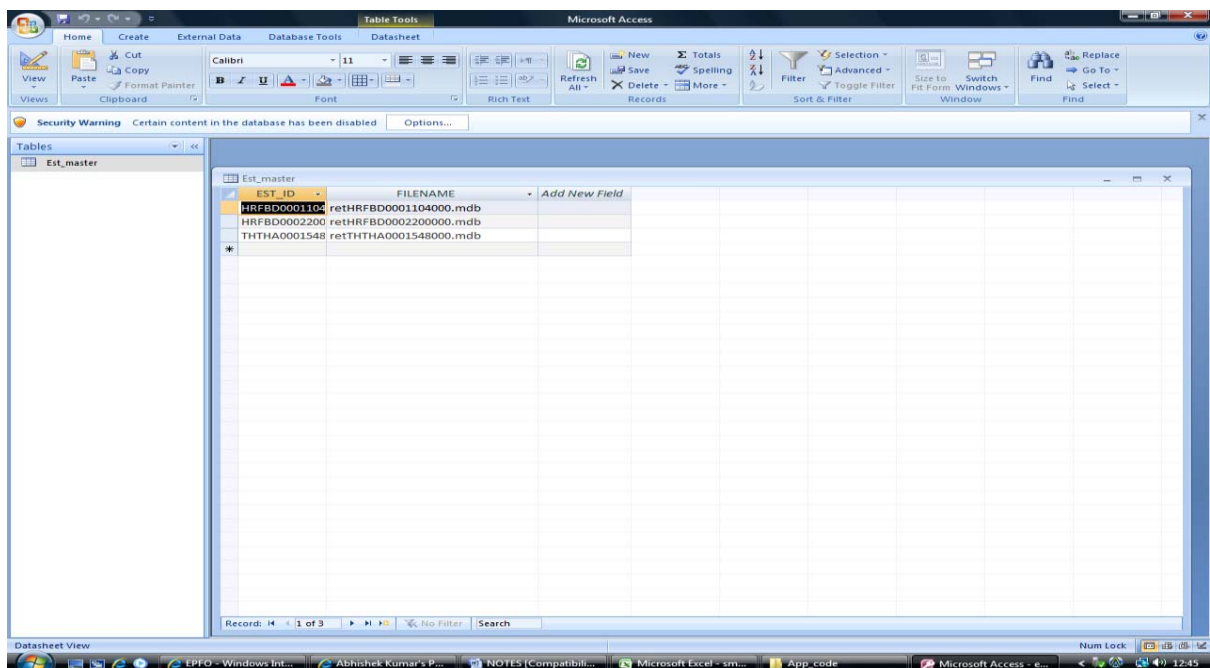


Add the following in the two fields as follows:

- a. In the field for EST\_ID put the Establishment ID in following format>>Region Code>>Office Code>>Estt Code number (7digits)>>Extension (3Digit). In case the establishment code number (given by SRO, Karnal) is say, HR/3501and there is no extension number, the ID will be HRKNL0003501000.
- b. In the field for FILENAME, use the same number and prefix it with ret and suffix with .mdb, for example in the above case it will be retHRKNL0003501000.mdb

This has to be done for all establishments added, in case you have entered data for more than one establishment.

After entry the est.mdb file will show as follows:



Here 3 establishments were added.

1. Use the Software.